



onor

THE SMART CERTIFICATION FOR ETHICAL COMMODITIES

**ONOR ELEVATES  
COMMODITIES  
THROUGH  
VERIFIED IMPACT**



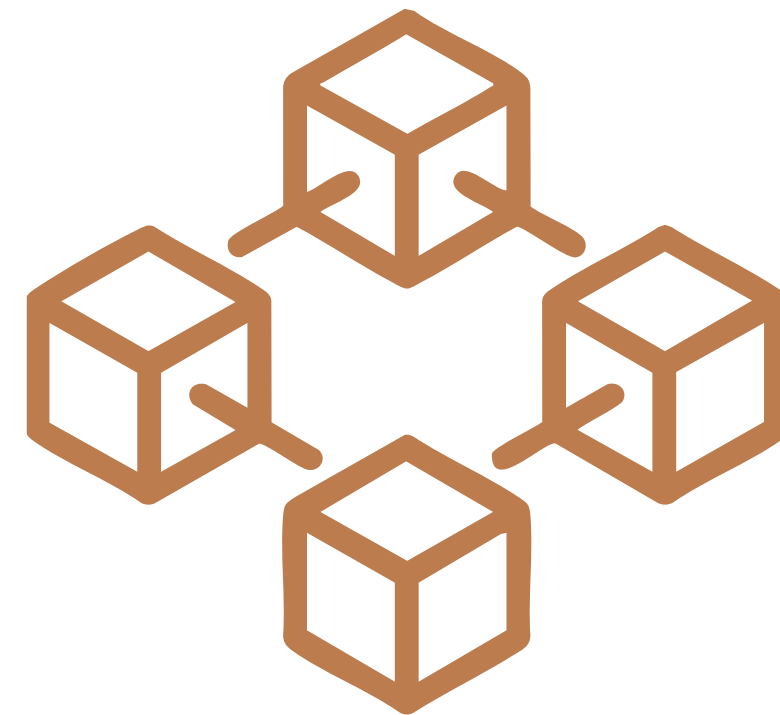
THE SMART CERTIFICATION FOR ETHICAL COMMODITIES

## Onor is a Hybrid Certification



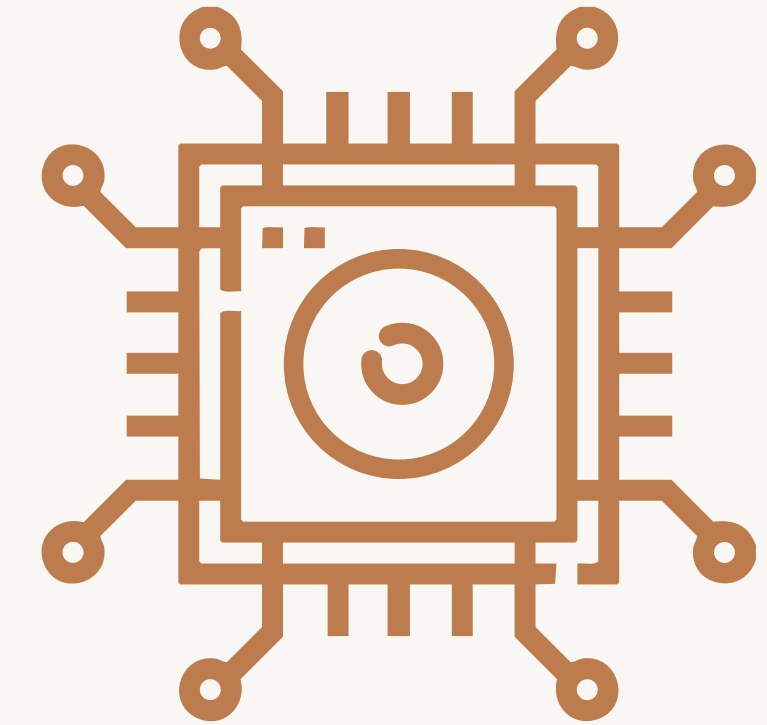
Human-Verified

**Real Eyes, Real Insight**



Blockchain-Backed

**Verifiable, Tokenized, Immutable**



AI-Analyzed

**Intelligence with Purpose**



# Human-Verified

Certified experts visit farms and production sites to evaluate product quality, environmental practices, and the well-being of farming communities.

Ethical and labor condition review

---

Physical / Analytic product inspection

---

Environmental impact assessment





# Blockchain-Backed

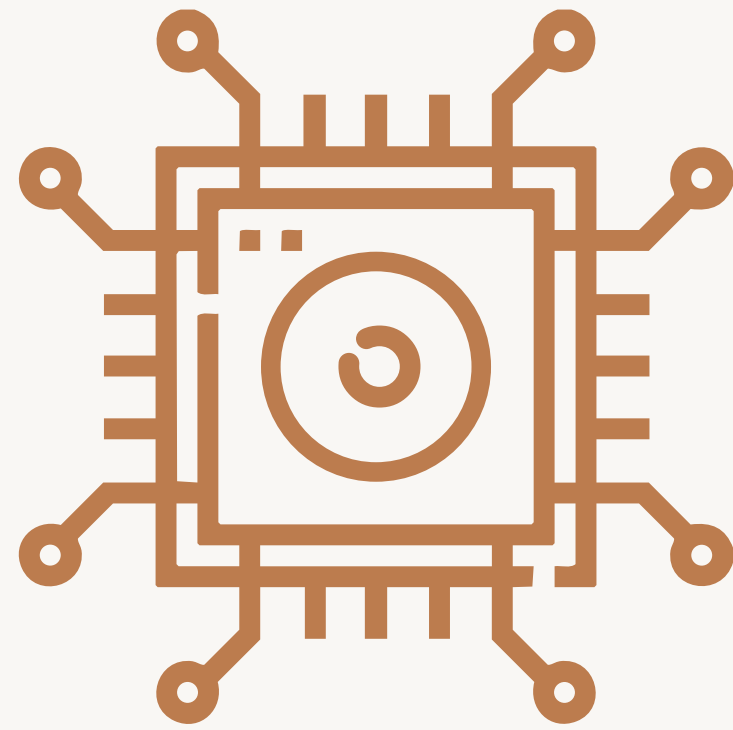
Behind every Onor-certified product lies a transparent, tamper-proof record.  
Secured by Hedera Hashgraph

Secured and time-stamped on Hedera Hashgraph

One token per certified batch

Public auditability through Mirror Nodes

Smart contracts for automated trust flow



# AI-Analyzed

With AI-Analyzed, Onor goes beyond human observation.  
Using machine learning to validate, detect, & optimize the certification process.

Cross-verification of human data

---

Predictive insights for quality & sustainability

---

Fraud detection and anomaly alerts

---

Adaptive learning with each new certification





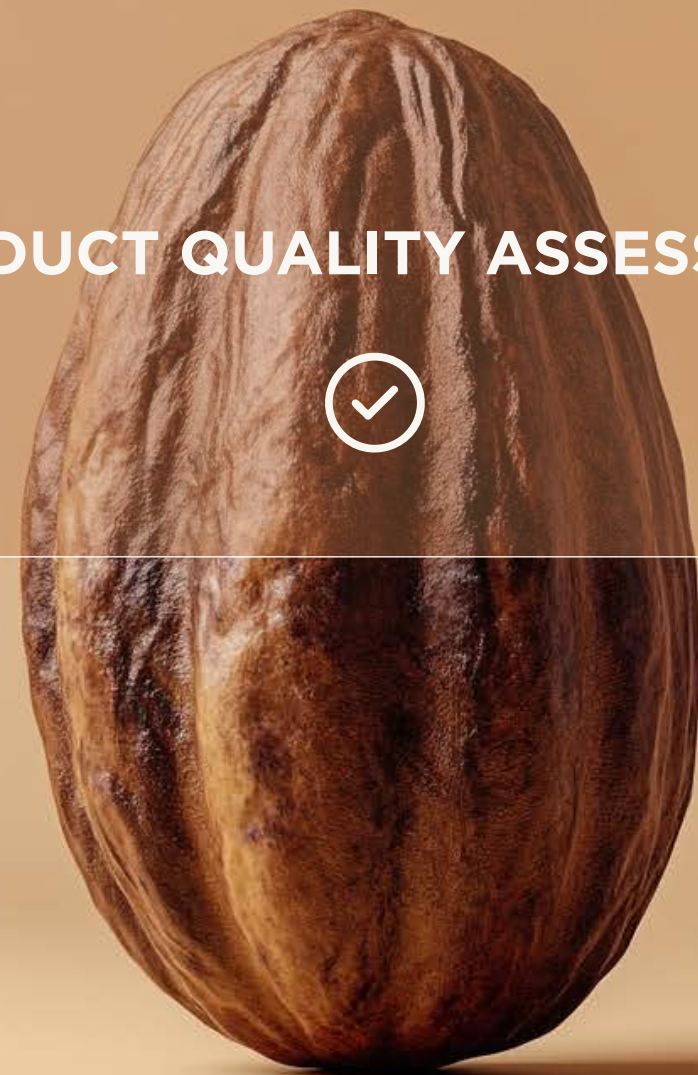
THE SMART CERTIFICATION FOR ETHICAL COMMODITIES

## A Physical & Analytical Inspections

**Onor** design and execute a rigorous, on-the-ground inspection system led by certified professionals. These inspections go beyond traditional quality checks by incorporating a 360° review of not only the agricultural commodity itself, but also the ecosystem of the origin and the social well-being of the farming communities.

### WHAT IS INSPECTED?

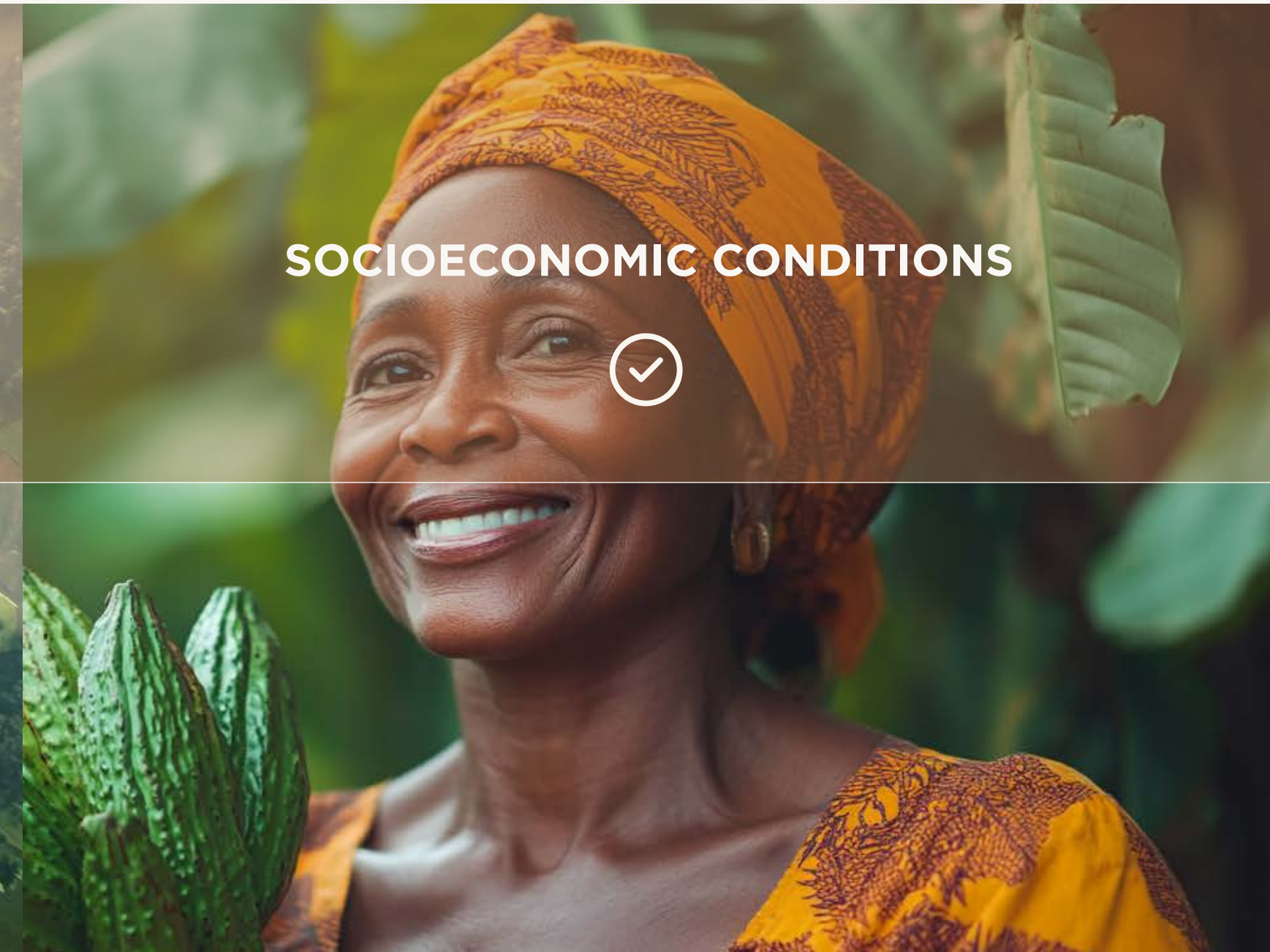
PRODUCT QUALITY ASSESSMENT



ENVIRONMENTAL SUSTAINABILITY



SOCIOECONOMIC CONDITIONS



# ONOR VERIFIES COMMODITIES DIRECTLY FROM THE SOURCE

QUALITY, ORIGIN AND COMPLIANCE



THE SMART CERTIFICATION FOR ETHICAL COMMODITIES

## Physical & Analytical Inspections

# A1 Product Quality Assessment

**Onor's Product Quality Assessment** is executed by certified field professionals using standardized protocols and mobile tech tools. It includes:

### A1.1 Physical Condition Analysis

Color, size, texture, moisture content, defects, uniformity.  
Detection of mold, pests, or contamination.

### A1.2 Analytical Testing

Measurement of biochemical markers:  
pH, fermentation levels, sugar content, polyphenols, theobromine.

### A1.3 Authenticity Validation

Optional DNA or batch origin validation for high-value commodities.  
Geo-verification via blockchain to avoid mislabeling.

## PRODUCT QUALITY ASSESSMENT





THE SMART CERTIFICATION FOR ETHICAL COMMODITIES

Physical & Analytical Inspections

## A2 Environmental Sustainability

Design to determine the ecological impact of commodity farming and its alignment with sustainable land use.

### A2.1 Soil & Ecosystem Health

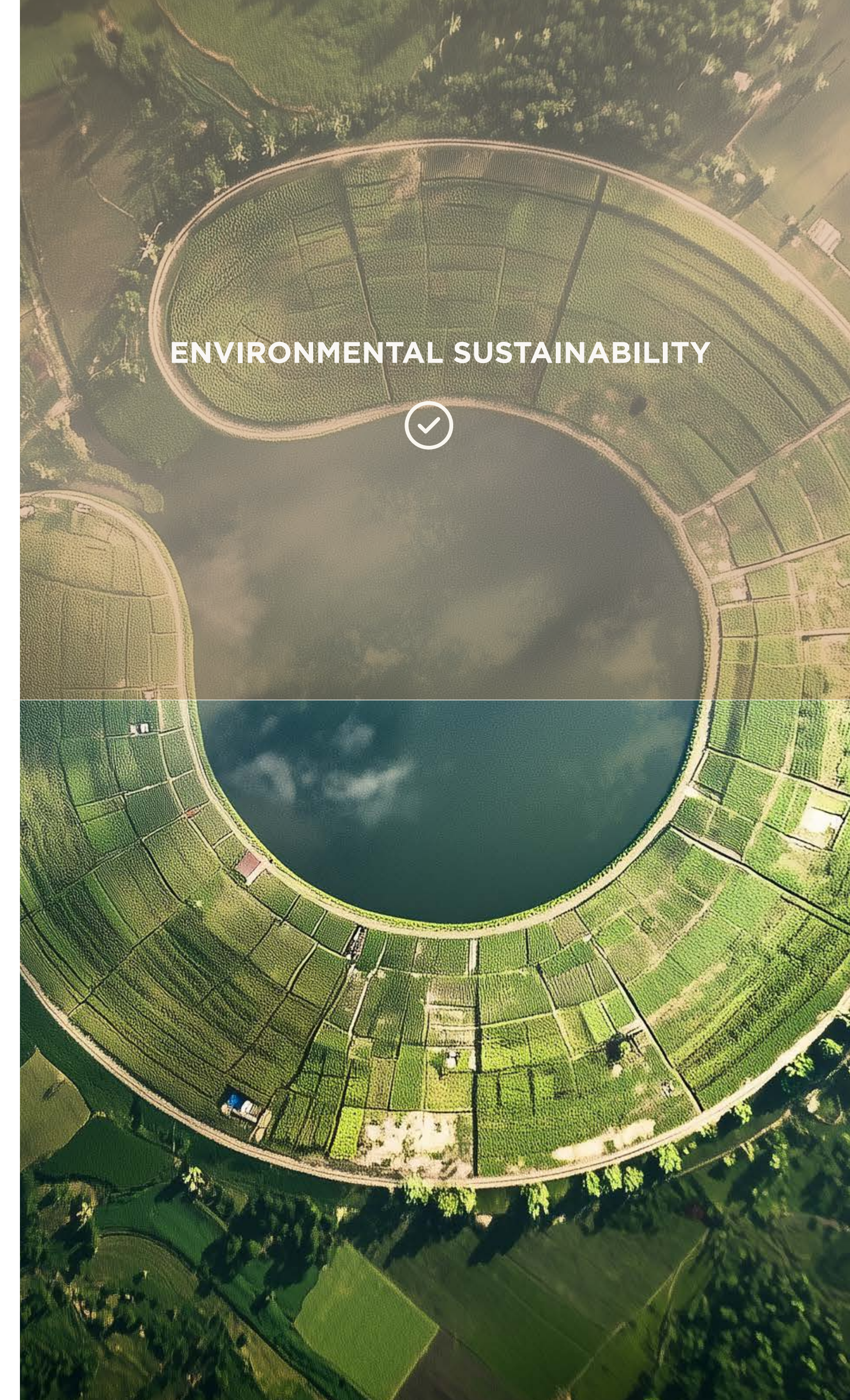
Inspects the physical condition of the soil  
Reviews farming techniques

### A2.2 Water Use & Resource Management

Verifies the source of irrigation water (rivers, wells, rainwater collection)  
Reviews irrigation methods and their efficiency

### A2.3 Agrochemical Impact & Land Integrity

Conducts an inventory of all agrochemicals used  
Inspects storage facilities and handling practices for safety compliance  
Satellite comparison and on-site verification of land use history.





THE SMART CERTIFICATION FOR ETHICAL COMMODITIES

Physical & Analytical Inspections

## A3 Socioeconomic conditions

Onor ensures that certified commodities are not only high in quality, but also produced under fair, ethical, and sustainable human conditions.

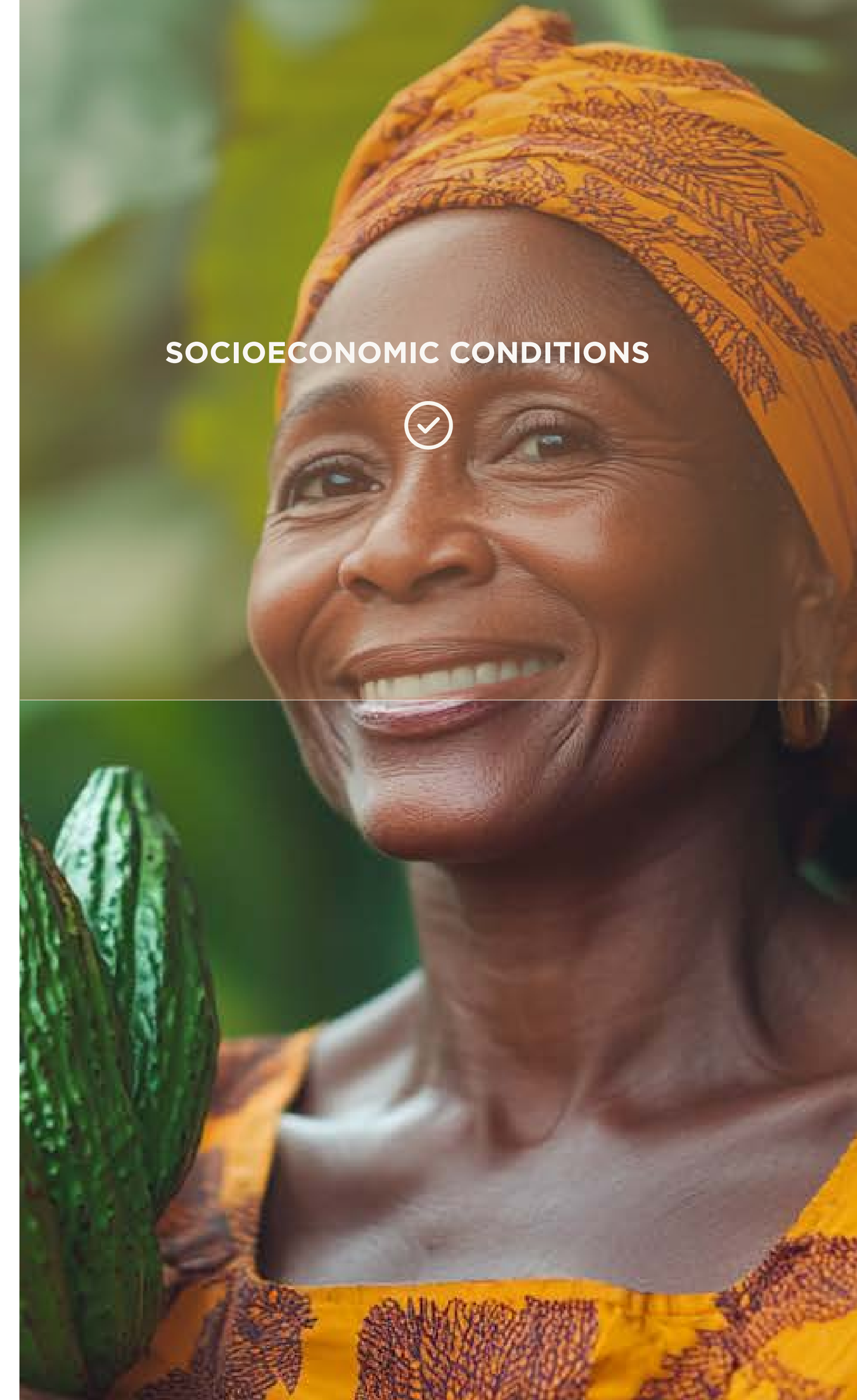
### A3.1 Assessment of Labor Conditions & Worker Well-Being

Verifies that working conditions are safe, lawful, and free from exploitation.  
Assesses wage levels relative to regional living wage benchmarks.  
Observes health and safety practices in the workplace.  
Visual inspection of working tools, clothing, and safety infrastructure.

### A3.2 Community Access to Basic Services & Development

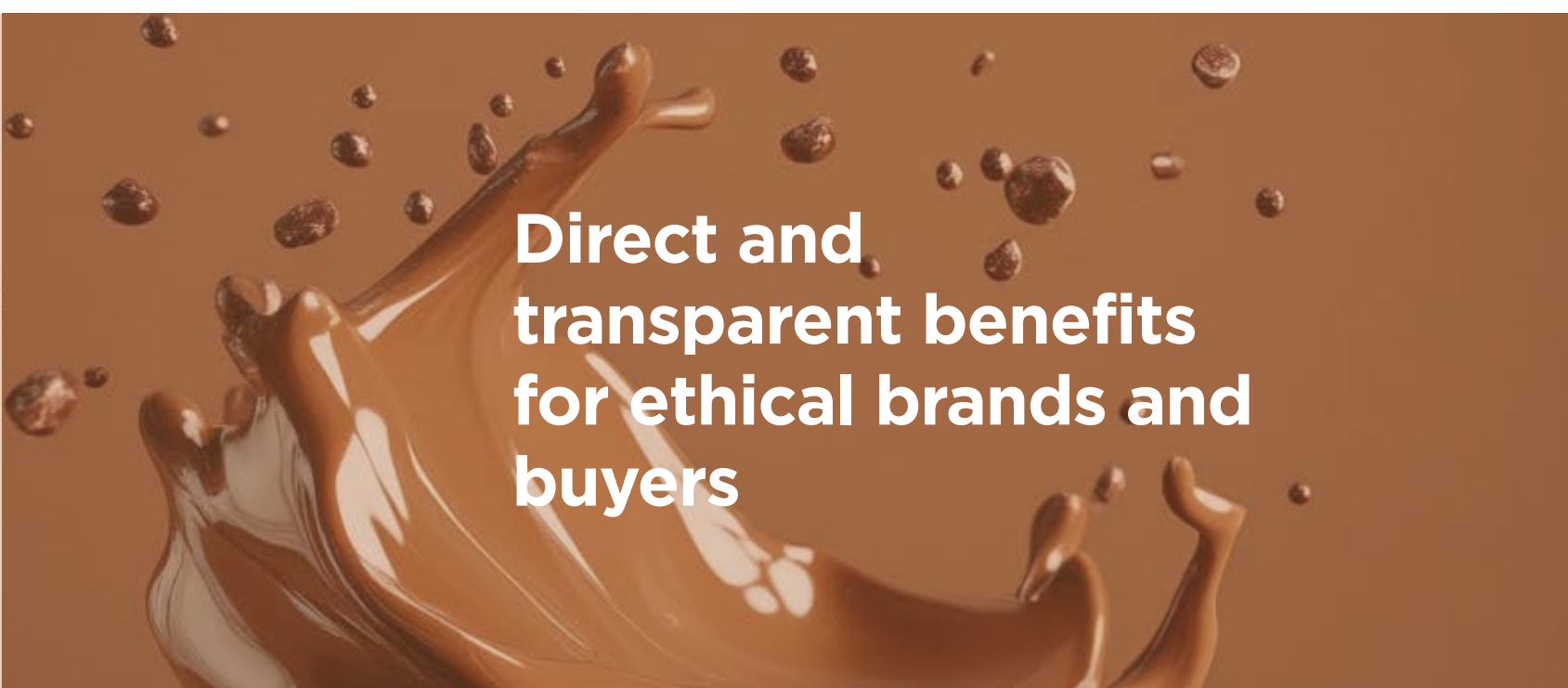
Evaluates the community's access to clean water, healthcare, education, and transportation.  
Identifies gaps in infrastructure and their effect on farming performance and well-being.  
Visits to nearby clinics, schools, or community centers.

SOCIOECONOMIC CONDITIONS

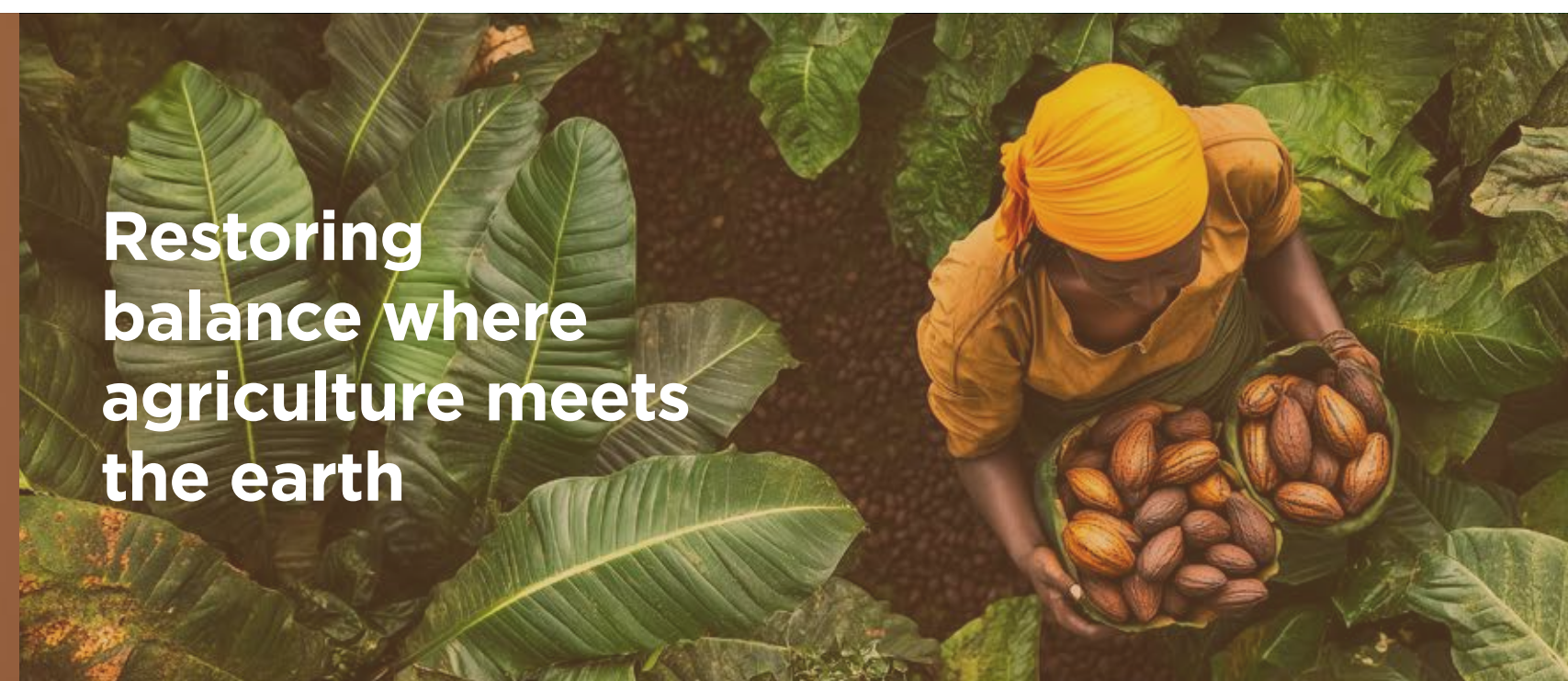




## A Physical & Analytical Inspections



**Direct and transparent benefits for ethical brands and buyers**



**Restoring balance where agriculture meets the earth**



**Prioritizing the quality of life of farming communities**

**95%** Audit-readiness thanks to live blockchain-stored inspection data.

**38%** Improvement in brand reputation through verified ESG alignment and transparency.

**35%** Boost in premium price willingness for certified commodities.

**35%** improvement in soil regeneration through practices recommended during inspection.

**40%** Reduction in harmful agrochemical usage thanks to environmental scoring and sustainable incentives.

**50%** Decrease in deforestation risk through on-site land-use verification and enforcement.

**30%** income increase through direct access to premium buyers who demand certified and ethical commodities.

**60%** Reduction in dependency on intermediaries, empowering cooperatives and individual farmers.

**45%** Improvement in local education and health metrics (in pilot regions) tied to reinvestment from token incentives.



THE SMART CERTIFICATION FOR ETHICAL COMMODITIES

## B Tokenization with Hedera

Digital Assets for Real-World Impact

Tokenization in Onor is not a speculative layer. It is a functional, secure and purpose-driven tool designed to transform agricultural certification into a dynamic, verifiable, and valuable asset.

# ONOR CONVERTS CERTIFIED BATCHES INTO DIGITAL TOKENS

CERTIFY. TOKENIZE. TRANSFORM.

HEDERA CONSENSUS SERVICE



HEDERA TOKEN SERVICE



HEDERA SMART CONTRACTS





THE SMART CERTIFICATION FOR ETHICAL COMMODITIES

## Tokenization with Hedera

# B1 Hedera Consensus Service

With HCS, **Onor** creates a public, immutable log of every event in the certification process. Building global trust at scale.

Every key action is securely timestamped and cryptographically verifiable.

- Each action (inspection result, AI confirmation, token issuance) is submitted as a message to the Hedera network.
- HCS assigns a consensus-based timestamp and publishes it to a public stream.
- These events are mirrored on external nodes, enabling full auditability for all actors.
- Each certified batch links to a QR code that displays this verifiable timeline to buyers and consumers.

HEDERA CONSENSUS SERVICE





THE SMART CERTIFICATION FOR ETHICAL COMMODITIES

Tokenization with Hedera

## B2 Hedera Token Service

**Onor's** vision is the transformation of certified agricultural commodities into secure, digital assets.

Using **Hedera Token Service**, Onor issues a unique token for every certified batch, turning products like cacao into verifiable, traceable, and tradable tokens anchored on the Hedera network.

- Once a batch passes physical inspection and AI validation, Onor generates a unique token
- Each token includes metadata — origin, date, producer ID, quality score, ESG rating — secured by HCS.
- Every token is linked to a scannable QR on the physical product, granting instant access to its blockchain record.

HEDERA TOKEN SERVICE





THE SMART CERTIFICATION FOR ETHICAL COMMODITIES

Tokenization with Hedera

## B3 Hedera Smart Contracts

**Hedera Smart Contracts** execute automatically when predefined conditions are met, ensuring trustless, secure, and real-time operations across supply chains.

Brings automation, fairness, and efficiency to every interaction across the certification ecosystem

- Automatically rewards producers with bonus tokens when sustainability benchmarks
- Locks tokens between buyer and producer until delivery conditions are confirmed
- Triggers token minting or burning based on product status
- Compiles certification milestones, emissions data, and ESG indicators

HEDERA SMART CONTRACTS





THE SMART CERTIFICATION FOR ETHICAL COMMODITIES

**B**

Tokenization with Hedera

## Decentralized infrastructure of verified value

**Onor's** mission to bring transparency, fairness, and sustainability to agricultural certification demands a technology that is secure, scalable, fast, and energy-efficient.

### **B4 Secure Documentation with Hedera File Service (HFS)**

All inspection reports, community assessments, and environmental records are stored securely using HFS, linked to certification IDs and QR codes.

### **B5 Global Visibility with Mirror Nodes**

Mirror nodes allow **Onor** to share real-time certification records with external systems, brands, NGOs, or regulators — without compromising security.



0.0001\$

AVERAGE PER TRANSACTION

0.000003KWH

AVERAGE PER TRANSACTION

1,145,064

TRANSACTIONS IN THE LAST 24 HOURS

0.0001\$

TOTAL MAINNET TRANSACTIONS



THE SMART CERTIFICATION FOR ETHICAL COMMODITIES

## C Artificial Intelligence

Digital Assets for Real-World Impact

Tokenization in **Onor** is not a speculative layer. It is a functional, secure and purpose-driven tool designed to transform agricultural certification into a dynamic, verifiable, and valuable asset.

# ONOR EMPOWERS CERTIFICATION THROUGH AI AGENTS

LEARN. VALIDATE. EVOLVE.

**DATA VALIDATION  
ANOMALY DETECTION**



**GRADING & QUALITY  
FORECASTING**



**MARKET INTELLIGENCE &  
OPPORTUNITY MATCHING**





THE SMART CERTIFICATION FOR ETHICAL COMMODITIES

## Artificial Intelligence

# C1 Data validation - Anomaly detection

**Onor's** certification system integrates an AI-driven layer of data validation and anomaly detection that reviews all inputs collected during physical inspections, community assessments, and environmental scoring

- Onor's AI analyzes every input and compares it with historical benchmarks, contextual norms, and internal consistency.
- It automatically detects unusual patterns, potential fraud, or inconsistencies.
- The system sends alerts to internal validators or pauses token issuance if issues are detected.
- Buyers, auditors, and consumers access AI-verified certification via QR codes — gaining transparency, confidence, and compliance assurance.

DATA VALIDATION - ANOMALY DETECTION





## Artificial Intelligence

# C2 Grading & Quality forecasting

**Onor's** grading system uses a combination of AI models and field-based data to assign a standardized quality score to each certified batch of commodity.

Also it leverages historical trends and environmental inputs to forecast future quality potential, helping producers, buyers, and markets make smarter decisions.

- Uses inspection data to compute a multi-factor quality grade, tied to certification and token metadata.
- Integrates AI forecasting models to predict how current practices, climate trends, or soil health will affect future yield or quality.
- Forecasts risk or improvement areas for future certifications.
- Recommends adjustments to improve grading (e.g., drying time, fermentation practices, agrochemical reduction).

## GRADING & QUALITY FORECASTING





THE SMART CERTIFICATION FOR ETHICAL COMMODITIES

## Artificial Intelligence

# C3 Market intelligence - Opportunity matching

**Onor** integrates AI-driven market intelligence to analyze supply, demand, pricing trends, and ESG preferences across global markets.

The system recommends ideal commercial opportunities for each certified batch and producer, helping close the gap between verified quality and market access.

- Monitors commodity trends, buyer requirements, sustainability premiums, and regional trade dynamics in real time.
- Identify high-potential producers for pre-financing or incentive programs.
- Tracks price fluctuations and ESG incentives by commodity type.
- Scores and ranks potential market channels for each certified producer.

MARKET INTELLIGENCE  
OPPORTUNITY MATCHING





THE SMART CERTIFICATION FOR ETHICAL COMMODITIES

## D How It Works | The Certification Process



**For Farmers & Producers**



**For Brands & Consumers**



**For Onor Certification**



THE SMART CERTIFICATION FOR ETHICAL COMMODITIES

How it works?

## D1 For Farmers & Producers

### D1.1 On-site Inspection Request

A producer, cooperative or local association applies for **Onor** certification.

### D1.2 Physical & Analytical Inspection

Certified professionals visit the farm to evaluate:  
*Product quality - Environment - Socioeconomic factors*

### D1.3 AI Review & Data Validation

Onor's AI checks for inconsistencies, flags anomalies, and confirms data integrity across all inspection inputs.

### D1.4 Certification Decision - Digital certification

### D1.5 Optional Token Creation - Certified commodity





How it works?

## D2 For Brands & Consumers

### D2.1 Sourcing Certified Batches

Brands or buyers search for **Onor**-certified producers with transparent quality and ESG credentials.

### D2.2 Access to Certification Data - QR code

Through a secure portal / QR scan, they view: *Origin, authenticity, Farm practices, Social and ambient impact.*

### D2.3 Purchase & Integration

Brands integrate the certified batch into their supply chain, marketing claims or ESG reporting.





How it works?

## **D3** For Onor Certification

### **D3.1 Data Capture - Timestamped Verification**

All inspection findings are uploaded digitally at the moment of audit.

### **D3.2 AI & Smart Contracts Activation**

Data is validated by AI; smart contracts determine certification approval or hold.

### **D3.3 Digital Storage & Tokenization**

Certified reports are stored with Hedera File Service, and tokenization (via HTS) is triggered if applicable.

### **D1.4 Global Visibility** - Digital certification

Mirror nodes make certification data public, traceable and interoperable with external platforms.





onor

THE SMART CERTIFICATION FOR ETHICAL COMMODITIES

<https://onorcertified.com>



THE SMART CERTIFICATION FOR ETHICAL COMMODITIES

# E The Opportunity Behind Onor

Trust Infrastructure for Sustainable Markets

**Onor** creates opportunity where it matters most — at the origin. By verifying quality, sustainability and ethics directly in the field, it enables inclusive trade and regenerates trust across the value chain.

# ONOR TURNS CERTIFICATION INTO AN INVESTABLE ASSET

CERTIFY. DIGNIFY. MULTIPLY.

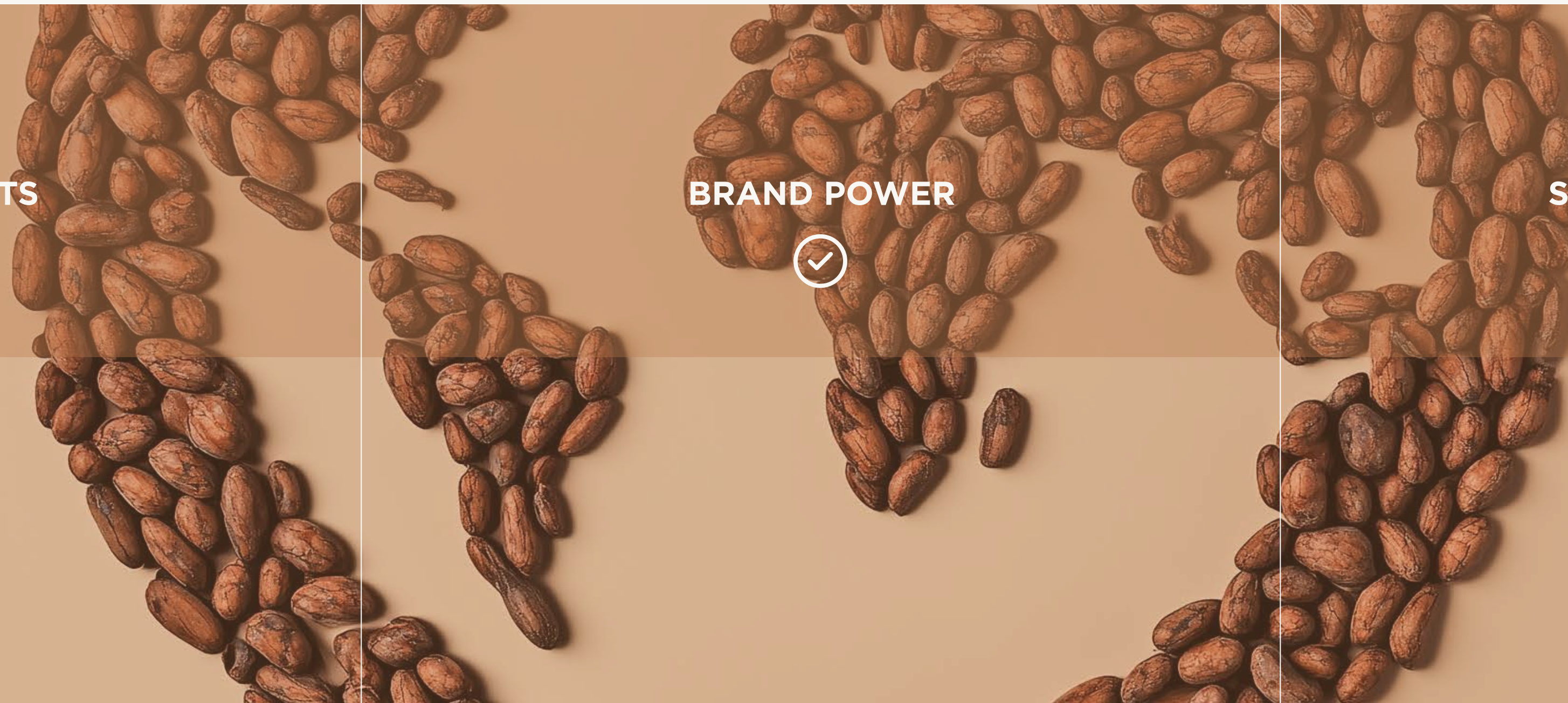
CORE BENEFITS



BRAND POWER



STRATEGIC PARTNERS





THE SMART CERTIFICATION FOR ETHICAL COMMODITIES

## E1 The Opportunity Behind Onor

### Core Benefits



#### **Trust at Origin**

Inspections, AI, and blockchain build unmatched transparency and traceability.



#### **Premium Market Access**

Producers gain up to 30–35% higher value for certified commodities.



#### **Compliance-Ready**

Aligns with ESG, EU Deforestation Law, Carbon Credits, and more.



#### **High Impact**

Improves lives, protects ecosystems, and elevates product integrity.



#### **Differentiated Through Intelligence & Technology**

Combines AI, physical inspections, and blockchain in one unified protocol.



#### **Scalable & Modular**

Built on the Hedera ecosystem to scale globally, token by token.



## **E2** The Opportunity Behind Onor

# Brand Power



### **QR Transparency Campaigns**

For ethical brands that want to tell the full story of their certified cacao, coffee or tea.



### **Data-Driven Impact Reports**

Certification dashboards for partners and CSR communication.



### **Certified by Onor Seal**

Licensing and visibility as a brand enhancer for traceability-led businesses.



### **Web Experience for Consumers**

Interactive microsites connected to QR codes with producer profiles, impact metrics and environmental data.



### **Sustainability Activation Kits**

For retailers or partners to engage audiences around traceable, ethical sourcing.



### **Co-branded Campaigns**

Collaborative content with certified brands highlighting their verified sourcing journey.



THE SMART CERTIFICATION FOR ETHICAL COMMODITIES

## **E3** The Opportunity Behind Onor

# Strategic Partners



### **Traceability-as-a-Service**

Enable brands and platforms to integrate Onor's certification layer into their own supply chains.



### **Carbon & Impact Tokenization**

Create tradable assets linked to regenerative practices and verified impact.



### **Marketplace Integrations**

Connect Onor-certified commodities to e-commerce, DeFi and B2B platforms.



### **Supply Chain Infrastructure Partnerships**

Collaborate with logistics, agritech, and compliance platforms to complete the certified ecosystem.



### **Research & Academic Alliances**

Collaborate on sustainability impact studies and AI development for agriculture.



### **Pilot Programs with Governments**

Co-develop national standards or incentives based on the Onor protocol.